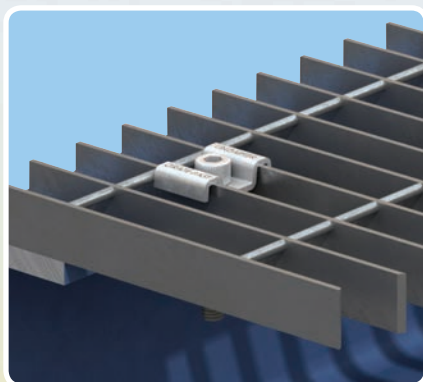
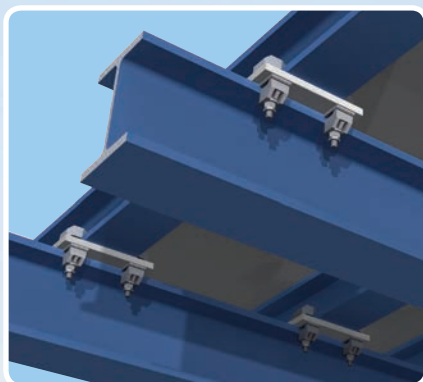


Steel-to-steel connections for

BRIDGES

by **lindapter**[®]



Application used on
Manhattan Bridge, NY
(pictured right)



www.LindapterUSA.com

Why Lindapter?

Since 1934, Lindapter has pioneered the design and manufacture of steel-to-steel connections which eliminate field drilling and welding. Here are just a few examples of how Lindapter's independently approved solutions save contractors' time and money:

Typical Applications



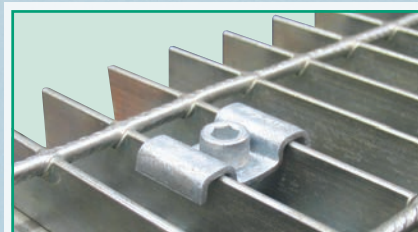
BRIDGE STRENGTHENING

Girder Clamps are used to connect reinforcing steel girders to the underside of the bridge.



TEMPORARY SUPPORTS

Contractors use Girder Clamps to temporarily connect supports to bridges during the construction process or a renovation.



SECURING MAINTENANCE ACCESS / WALKWAYS

Steel flooring can be secured to the supporting framework from above with Lindapter's floor connections and simple hand tools.



PIPING AND ELECTRICAL SUPPORTS

Lindapter's pipe supports can be used to secure electrical services to the steel sections of the bridge, including inclined steel beams.



LIGHTWEIGHT FIXTURES

Typical applications include solar panels, lighting, equipment, signage and cameras.



HEAVY DUTY ATTACHMENTS

Lindapter's Girder Clamp is often specified for securing walkway supporting frames, maintenance cradles, elevators and stairs.

Pictured: San Rafael Bridge, CA
Lindapter Type AAF clamps secured multiple digital display boards and traffic signs to the steel beams on the bridge.

Key Lindapter product benefits



Safe & Simple



Innovative & Economical



Tested & Proven



Strong & Durable



Fast & Efficient

Project Examples



ALEXANDER HAMILTON BRIDGE, NY

Product: **Type AF**
Application: **Structural support connections on a refurbishment**



Lindapter Engineers provided a custom connection design using Type AF clamps to secure temporary support systems for cantilevered roadways during the major refurbishment and widening of the bridge, which now accommodates eight lanes of traffic over the Harlem River.

The adjustability of the Type AF, as well as its high resistance to slip and tensile performance meant this was the contractors' ideal solution.



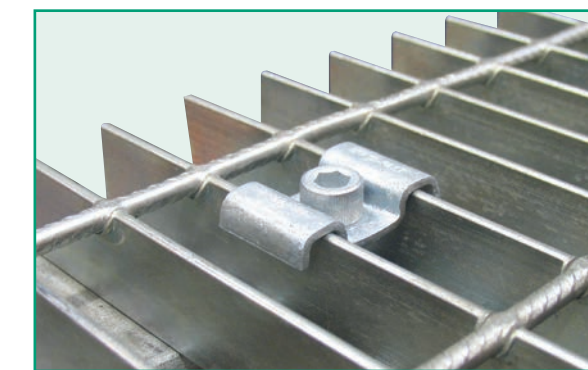
BENJAMIN FRANKLIN BRIDGE, PA

Product: **Grate-Fast® Stainless Steel**
Application: **Securing open grate flooring for maintenance access**



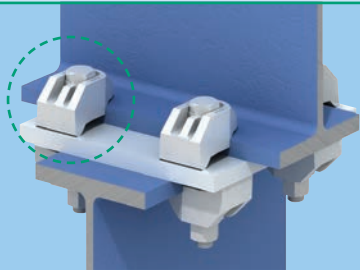
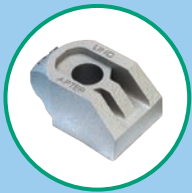
Grate-Fast secured open bar grating platforms along the full length of the bridge so Engineers could change the accent lighting.

Using just standard hand tools to secure the grating quickly, contractors completed the project on time and on budget. Grate-Fast was chosen for its superior clamping force, durability and Lloyd's Register Type Approval, which covers clamping force, vibration and shock resistance.



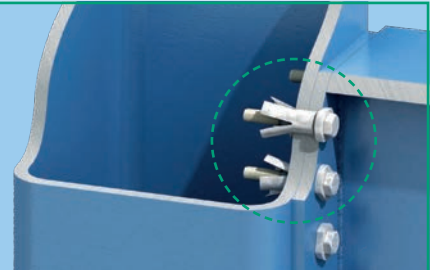
Lindapter Product Range

Since 1934, Lindapter has continuously expanded its product range to include connection systems for almost any steel-to-steel application. Today, Lindapter is recognized worldwide for its innovative designs and unique solutions to even the most demanding steel connections.



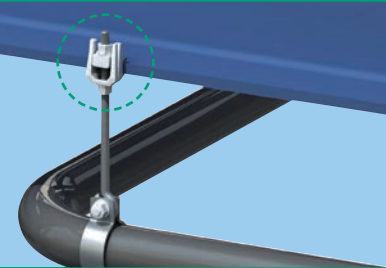
GIRDER CLAMPS

Clamping systems used to connect steel sections together without the need to field drill or weld, and without damaging the steel members.



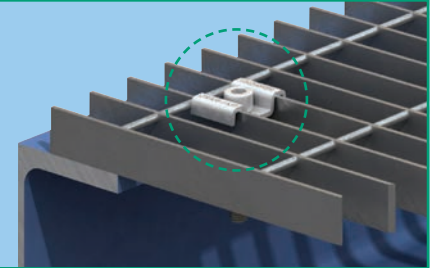
HOLLO-BOLTS

ICC-ES approved expansion bolts for connecting to Hollow Structural Section (HSS) or where access is available from one side only.



PIPE / CONDUIT SUPPORTS

A variety of adjustable connections used to suspend building services such as electrical equipment or pipework from structural or secondary beams.

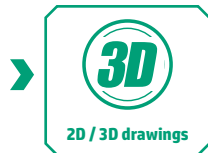
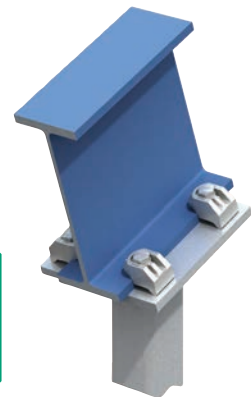
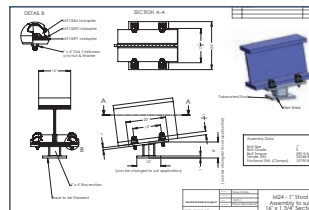


STEEL FLOOR CONNECTIONS

Heavy duty and removable fasteners used to secure solid metal plate or bar grating to supporting steel using only simple hand tools from above.

FREE CONNECTION DETAILING

Lindapter's team of experienced Engineers can design a custom solution **free of charge**, providing drawings and 2D or 3D CAD files that can be imported into most major software systems. For more information contact the Technical Support team at support@LindapterUSA.com



Get your copy of the Lindapter product catalog for full design information:
Call **866 566-2658 (BOLT)**, email inquiries@LindapterUSA.com or visit www.LindapterUSA.com

